



## Explanation of Results STEP 2010

All STEP questions are marked out of 20. The mark scheme for each question is designed to reward candidates who make good progress towards a solution. A candidate reaching the correct answer will receive full marks, regardless of the method used to answer the question.

All the questions that are attempted by a student are marked. However, only the 6 best answers are used in the calculation of the final grade for the paper.

There are five grades for STEP Mathematics which are:

S – Outstanding

1 – Very Good

2 – Good

3 – Satisfactory

U – Unclassified

The rest of this document presents, for each paper, the grade boundaries (minimum scores required to achieve each grade), cumulative percentage of candidate achieving each grade, and a graph showing the score distribution (percentage of candidates on each mark).

### STEP Mathematics I (9465)

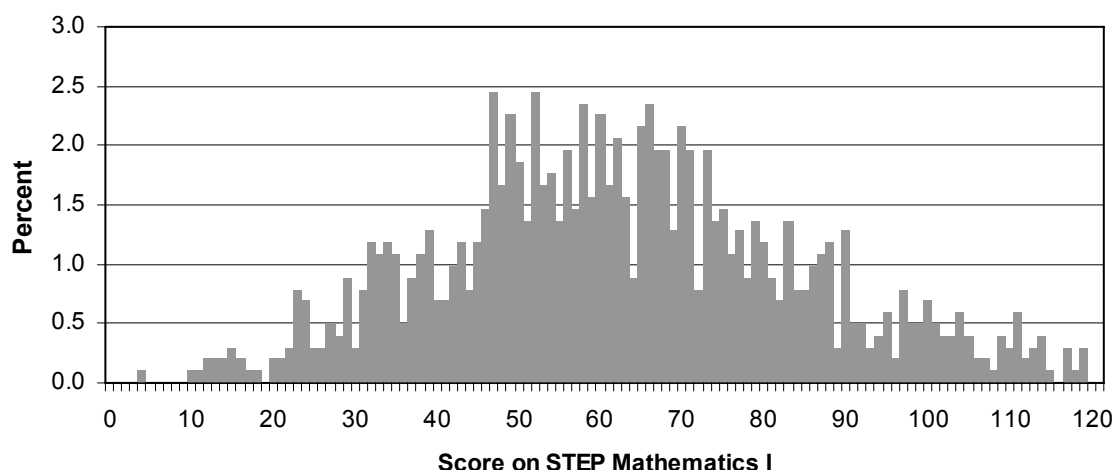
#### Grade boundaries

Maximum Mark	S	1	2	3	U
120	103	84	70	47	0

#### Cumulative percentage achieving each grade

Maximum Mark	S	1	2	3	U
120	4.8	16.9	35.4	77.7	100.0

#### Distribution of scores



**STEP Mathematics II (9470)**

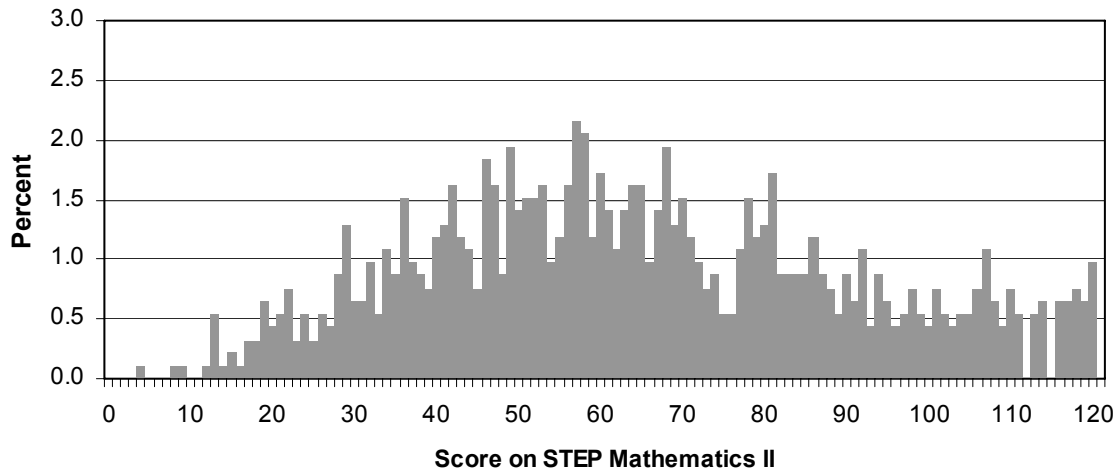
*Grade boundaries*

Maximum Mark	S	1	2	3	U
120	105	79	64	40	0

*Cumulative percentage achieving each grade*

Maximum Mark	S	1	2	3	U
120	9.6	30.2	48.1	82.4	100.0

*Distribution of scores*



**STEP Mathematics III (9475)**

*Grade boundaries*

Maximum Mark	S	1	2	3	U
120	78	56	46	29	0

*Cumulative percentage achieving each grade*

Maximum Mark	S	1	2	3	U
120	15.3	41.7	60.1	88.7	100.0

*Distribution of scores*

